

Title:	Face Terminal Wiegand Output Configuration	Version:	v1.0	Date:	4/6/2019
Product:	Access Control	Page:	1 of 4		

Face Terminal Wiegand Output Configuration

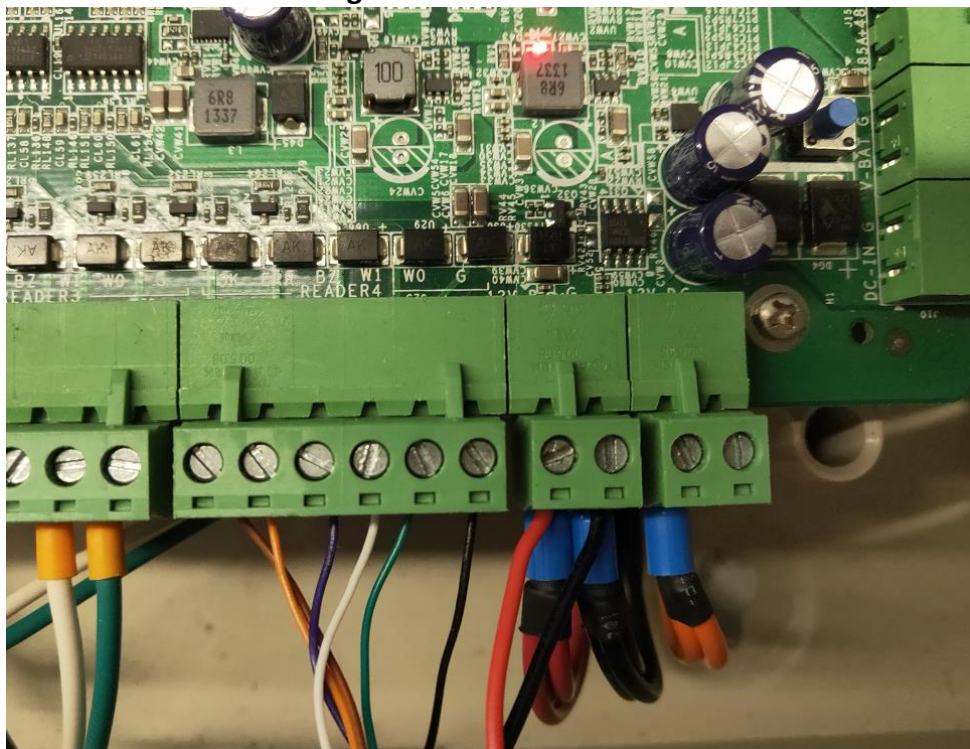
Instructions

Face terminals, such as K1T604, 605, 606, 607 support Wiegand output mode. In this output mode, face terminal will send person's card number after this person authenticate successfully on the terminal. So you can connect face terminal to access controller or other face terminal to work as a reader.

Steps

1. Wiring

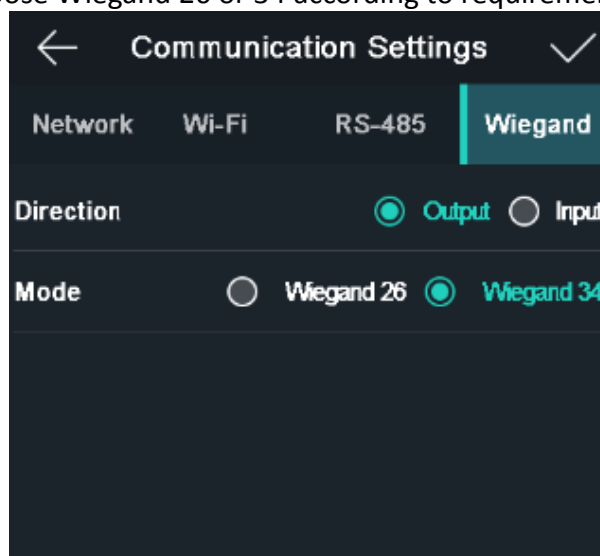
Connect face terminal's Wiegand to controller or another access control terminal:



2. Power on face terminal and controller.

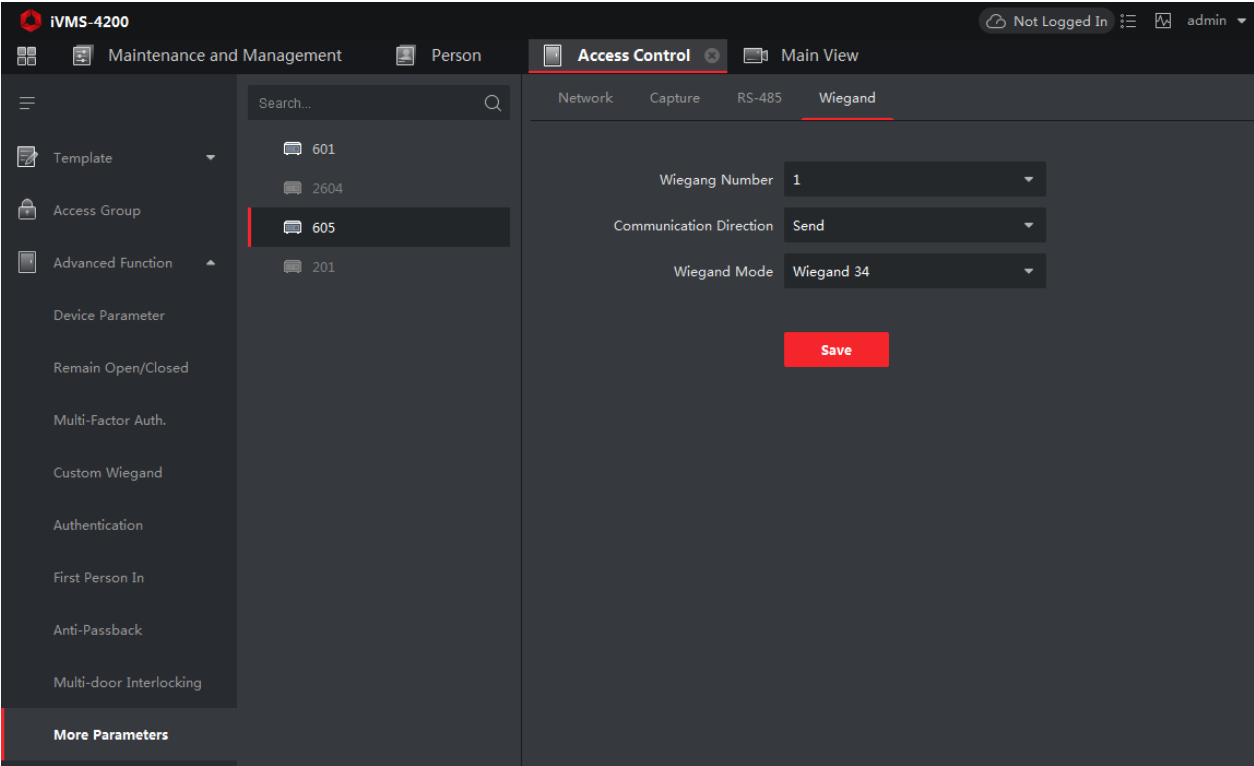
3. Change face terminal's Wiegand mode to output:

We can do this step either on ivms4200 or device local interface. Choose direction as **output** and choose Wiegand 26 or 34 according to requirement.



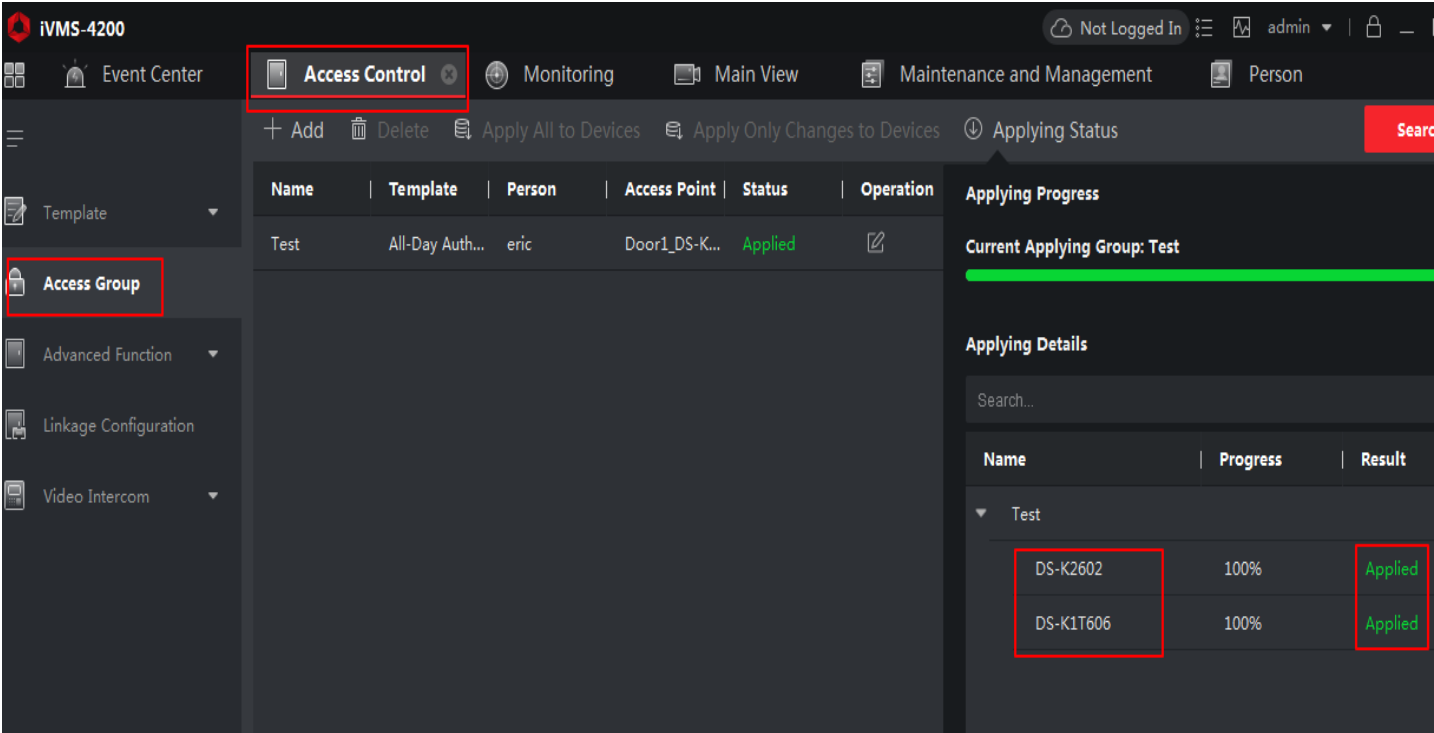
Local Interface

Title:	Face Terminal Wiegand Output Configuration	Version:	v1.0	Date:	4/6/2019
Product:	Access Control	Page:	2 of 4		



4200 Interface

4. Apply person information to both controller and face terminal



Title:	Face Terminal Wiegand Output Configuration	Version:	v1.0	Date:	4/6/2019
Product:	Access Conrtol	Page:	3 of 4		



First Choice for Security Professionals
***HIK*VISION Technical Support**